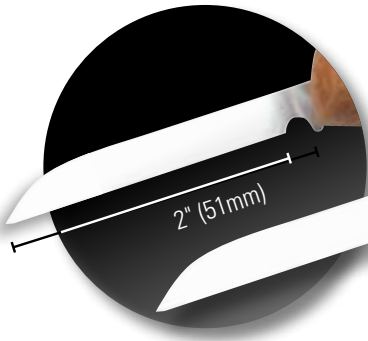
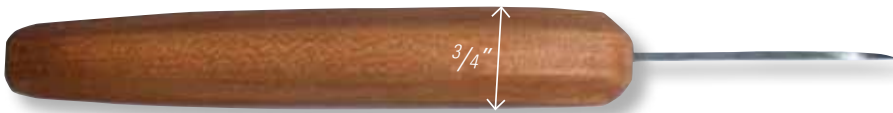


**Flexcut Pro Series Flat Grind Blade  
FP03 2" Roughing Knife**



Full-size handle

5 1/2"



3/4"

**2" Roughing Knife** – The 2" Flexcut Pro Roughing Knife features a robust full flat grind sheepsfoot blade in precision heat treated 1095 steel, polished to a brilliant mirror finish. This knife excels at handling heavy preliminary stock removal work. The longer blade length, slim profile, and detail tip provides plenty of blade to cover a wide variety of heavy cuts in various stock sizes while maintaining full control.



8"

3"



Easy grip surface.

Precision heat treated blades

Bold Facets.

Larger surface area above blade for more grip styles and better control.

Minimal bulk blade choil to prevent interference during carving.

